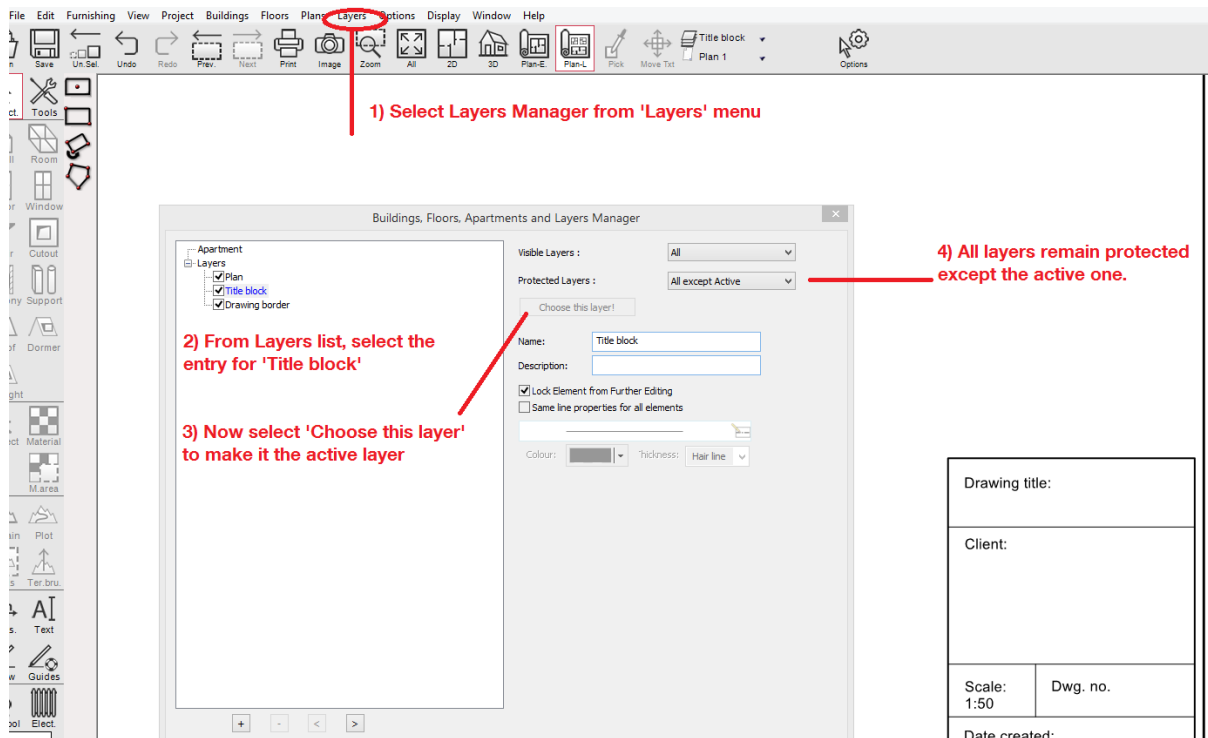
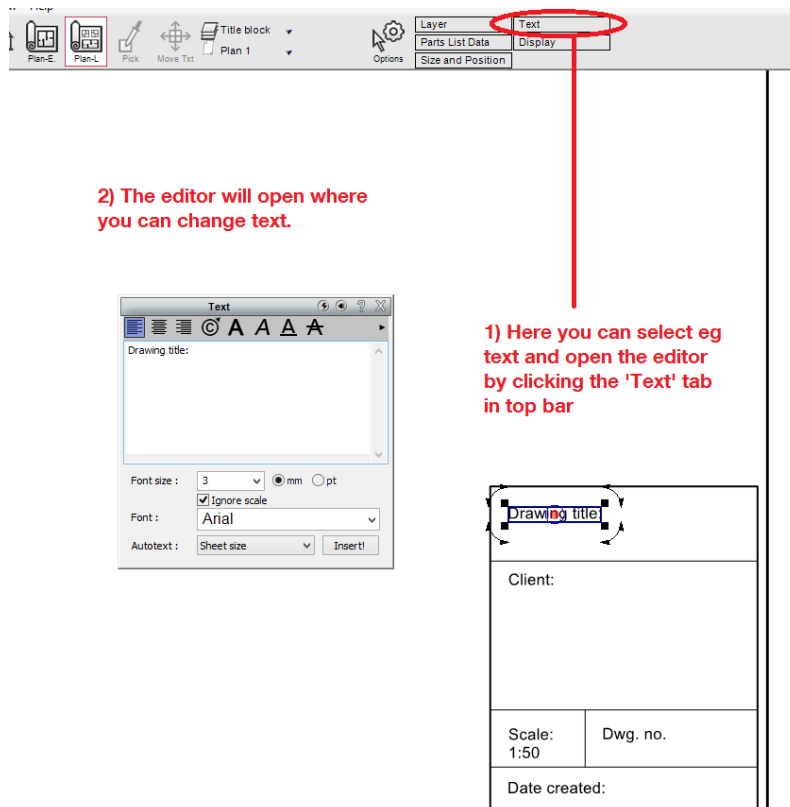


1. In Plan Layout mode, if you are using one of the standard title blocks, by default, it is locked from being edited.

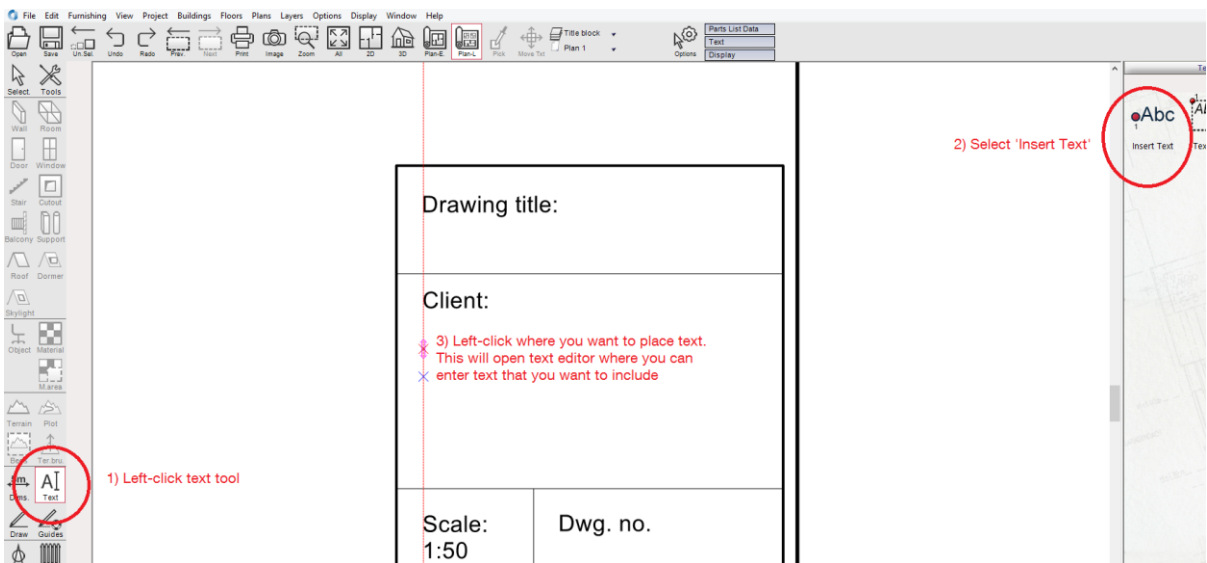
2) To edit block, locate Layers Manager - see below steps



3) You will now be able to edit the title block eg left-click on elements and text within block



4) You can insert you own text in title block by selecting text tool eg below



5) You can edit other parts of Title block too eg lines, box etc. You can load a logo if required through the menu 'File > Import > Image File'

You can of course completely remove default title block and create your own using 2d drawing elements

